



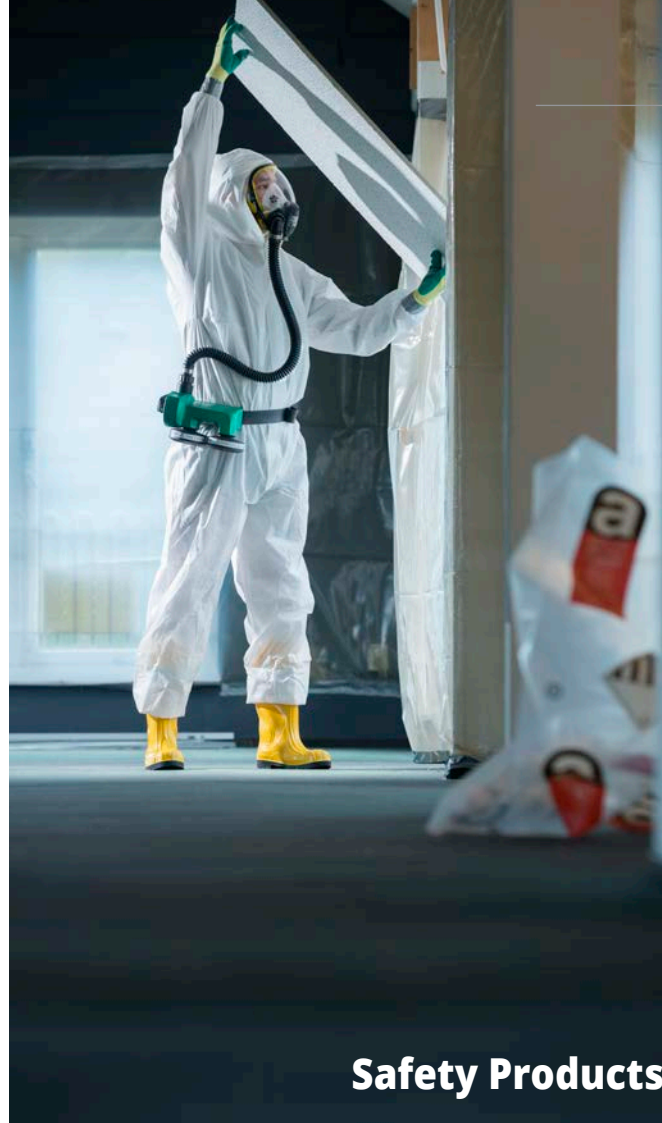
Dehaco Products



Hydraulic Attachments



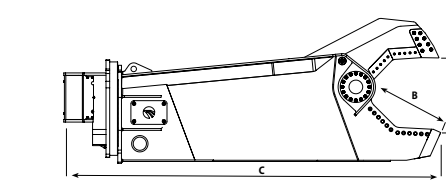
Dust suppression systems



Safety Products



Crushers
Scrap shears
Pulverisers
Multisystems



Technical specifications		MS09R	MS15R	MS22R	MS30R	MS40R	MS60R	MS140R
Carrier weight (bucket position)	t	10 - 15	16 - 20	21 - 27	28 - 35	40 - 50	60 - 70	120 - 160
Excavator weight (stick mounted)	t	7 - 10	10 - 15	12 - 18	15 - 24	24 - 30	30 - 50	80 - 120
Work pressure	bar	300 - 320	320 - 350	320 - 350	320 - 350	320 - 350	320 - 350	320 - 350
Oil flow	l/min	90 - 120	130 - 150	180 - 220	200 - 250	250 - 300	280 - 320	600 - 800

MS + CR jawset	Weight incl. top bracket	kg	950	1.650	2.210	2.750	4.550	6.500	14.000
	Cutting force	t	140	190	272	285	400	480	-
	Jaw opening	mm	650	750	890	900	1.200	1.540	2.500
	Height	mm	1.550	1.860	1.980	2.240	3.045	3.255	4.300
MS + CP jawset	Weight incl. top bracket	kg	-	1.700	2.250	2.900	4.650	7.000	-
	Cutting force	t	-	188	270	266	400	571	-
	Jaw opening	mm	-	650	780	875	950	1.250	-
	Height	mm	-	1.830	1.955	2.260	2.950	3.095	-
MS + SH jawset	Weight incl. top bracket	kg	950	1.700	2.200	2.850	4.550	6.600	14.000
	Cutting at pin	t	212	365	874	750	1.250	1.400	3.400
	Jaw opening	mm	275	330	460	485	620	875	1.150
	Height	mm	1.415	1.800	1.995	2.070	2.845	3.165	4.150
MS + CC jawset	Weight incl. top bracket	kg	980	1.700	2.235	2.900	4.700	6.600	-
	Cutting force	t	114	195	229	275	467	507	-
	Jaw opening	mm	585	700	830	825	1.075	1.385	-
	Height	mm	1.500	1.860	2.020	2.220	3.070	3.355	-
MS + PSH jawset	Weight incl. top bracket	kg	-	-	2.070	2.650	4.300	6.000	-
	Cutting at pin	t	-	-	1.016	750	1.250	1.400	-
	Jaw opening	mm	-	-	300	225	370	400	-
	Height	mm	-	-	1.895	2.160	2.705	3.090	-

For more information contact your dealer:



Copyright 2019, Dehaco B.V.

Dehaco reserves the right to develop and alter products without further notice. Misprints and printing errors reserved. The colour of the products may vary slightly from those shown in this brochure.



EN/Div./Crushers/Shears/2019-01

Technical specifications		SH25R	SH50R	SH100R	SH130R	SH180R	SH310R
Excavator weight (bucket place)	t	5 - 7	7 - 10	11 - 13	13 - 17	18 - 25	30 - 40
Excavator weight (stick place)	t	2 - 4	4 - 6	7 - 10	8 - 12	14 - 18	20 - 28
Operational weight	kg	380	650	1.100	1.220	2.100	3.300
Operating pressure	bar	200 - 250	250 - 300	250 - 300	250 - 300	320 - 350	320 - 350
Oil flow	l/min	60 - 100	80 - 100	90 - 110	90 - 110	150 - 200	200 - 250
Operating pressure rotation	bar	190 - 200	90 - 100	190 - 200	90 - 100	130 - 150	100 - 115
Oil flow rotation	l/min	10 - 15	15 - 20	10 - 15	30 - 40	30 - 40	30 - 40
Jaw opening A	mm	195	290	375	375	445	565
Jaw depth B	mm	200	290	395	395	525	630
Length of shear C	mm	1.350	1.900	2.000	2.100	2.700	3.300

Technical specifications		SH410R	SH550R	SH700R	SH900R	SH1500R	SH2000R
Excavator weight (bucket place)	t	45 - 55	55 - 65	75 - 85	90 - 110	110 - 170	170 - 200
Excavator weight (stick place)	t	28 - 39	39 - 45	45 - 60	60 - 80	80 - 110	110 - 150
Operational weight	kg	4.700	5.750	7.700	10.100	14.500	21.000
Operating pressure	bar	320 - 350	320 - 350	320 - 350	320 - 350	320 - 350	320 - 350
Oil flow	l/min	250 - 300	275 - 375	500 - 600	600 - 700	700 - 1.000	700 - 1.000
Operating pressure rotation	bar	100 - 115	100 - 115	140 - 150	170 - 190	170 - 200	170 - 200
Oil flow rotation	l/min	30 - 40	30 - 40	50 - 60	55 - 65	140 - 150	140 - 150
Jaw opening A	mm	670	760	830	940	1.100	1.200
Jaw depth B	mm	720	780	840	950	1.100	1.200
Length of shear C	mm	3.700	3.950	4.300	4.600	5.200	6.000

MCP FIXED PULVERISERS



MCP WITH FIXED TOOTH PLATES

Technical specifications		MCP300	MCP480	MCP800	MCP910
Carrier weight class	t	2 - 4	5 - 10	18 - 27	28 - 38
Operational weight	kg	150	490	2.050	2.850
Operating pressure	bar	200 - 250	220 - 280	280 - 320	280 - 320
Oil flow	l/min	30 - 60	80 - 100	180 - 220	220 - 280
Jaw opening	mm	300	480	850	1.000
Height	mm	770	1.225	2.070	2.400



MCP WITH INTERCHANGEABLE TOOTH PLATES

Technical specifications		MCP600-IT	MCP800-IT	MCP910-IT	MCP1000-IT	MCP1300-IT
Carrier weight class	t	11 - 18	18 - 27	28 - 38	39 - 50	60 - 90
Operational weight	kg	1.050	2.200	3.100	4.200	8.000
Operating pressure	bar	280 - 320	280 - 320	280 - 320	280 - 320	320 - 350
Oil flow	l/min	100 - 180	180 - 220	220 - 280	280 - 320	500 - 600
Jaw opening	mm	620	830	1.000	1.150	1.300
Height	mm	1.600	2.070	2.400	2.700	3.250

RP ROTATING PULVERISERS



RP WITH FIXED TOOTH PLATES

Technical specifications		RP07	RP16	RP18	RP25
Carrier weight class	t	7 - 10	16 - 20	21 - 26	27 - 35
Operational weight	kg	660	1.720	2.000	2.750
Operating pressure	bar	220 - 280	300 - 350	300 - 350	300 - 350
Oil flow	l/min	90 - 120	180 - 200	180 - 200	200 - 220
Jaw opening	mm	500	700	760	930
Height	mm	1.560	2.020	2.136	2.440



RP WITH INTERCHANGEABLE TOOTH PLATES

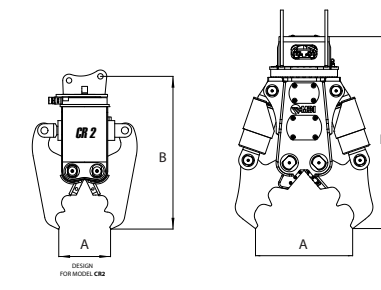
Technical specifications		RP10-IT	RP16-IT	RP20-IT	RP30-IT	RP40-IT	RP50-IT	RP80-IT
Carrier weight class	t	10 - 15	16 - 20	21 - 26	27 - 35	35 - 50	50 - 65	70 - 95
Operational weight	kg	1.100	1.690	2.000	2.850	4.100	5.200	8.200
Operating pressure	bar	300 - 350	300 - 350	300 - 350	300 - 350	300 - 350	300 - 350	300 - 350
Oil flow	l/min	100 - 180	130 - 150	180 - 200	200 - 220	220 - 280	335 - 375	500 - 600
Jaw opening	mm	580	700	750	900	1.000	1.100	1.250
Height	mm	1.710	2.150	2.130	2.400	2.780	3.000	3.600

CR CRUSHERS



MECHANICAL ROTATION

Technical specifications		CR2	CR4	CR5
Carrier weight class	t	3 - 5	3 - 6	6 - 10
Operational weight	kg	240	320	530
Operating pressure	bar	180 - 220	250	200 - 250
Oil flow	l/min	30 - 50	65	50 - 90
Jaw opening A	mm	360/0	440/0	450/0
Height B	mm	1.070	1.070	1.290



HYDRAULIC ROTATION

Technical specifications		CR5R	CR15R	CR20R	CR26R	CR40R	CR60R	CR80R	CR100R	CR120R
Carrier weight class	t	7 - 11	16 - 20	21 - 26	27 - 35	45 - 55	60 - 70	75 - 95	100 - 120	120 - 140
Operational weight	kg	630	1.600	2.100	2.800	4.720	6.250	8.250	11.000	12.000
Operating pressure	bar	200 - 250	280 - 320	280 - 320	280 - 320	280 - 320	320 - 350	320 - 350	320 - 350	320 - 350
Oil flow	l/min	50 - 90	130 - 150	180 - 220	220 - 250	250 - 300	320 - 350	500 - 600	600 - 800	600 - 800
Jaw opening A	mm	450/0	800/0	1.050/0	1.100/0	1.350/0	1.580/0	1.800/0	2.050/0	2.310/320
Height B	mm	1.315	1.800	2.030	2.200	2.800	3.020	3.400	3.200	3.300

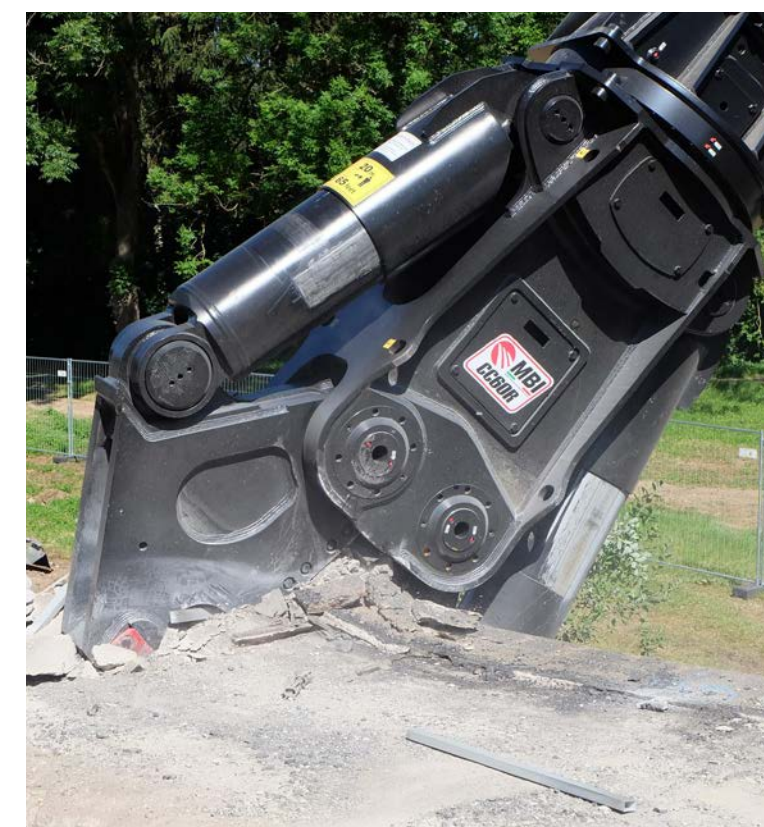
MCR CRUSHERS

MCR WITH INTERCHANGEABLE TEETH

Technical specifications		MCR350	MCR650	MCR950
Carrier weight class	t	2 - 4	5 - 14	9 - 16
Operational weight	kg	320	630	920
Standard weight	kg	290	570	725
Operating pressure	bar	250	350	350
Operating pressure rotation	bar	200	210	210
Oil flow	l/min	180	180	180
Oil flow rotation	l/min	25	25	25
Jaw opening	mm	415	500	690
Jaw depth	mm	220	270	330
Height	mm	1.010	1.420	1.825
Force at blade	ton	100	120	240
Force at tips	ton	32	47	65



CC CRUSHERS



Technical specifications		CC35R	CC65R
Carrier weight class	t	30 - 40	60 - 70
Operational weight	kg	3.500	6.650
Operating pressure	bar	320 - 350	320 - 350
Oil flow	l/min	280 - 300	500 - 600
Jaw opening	mm	1.100	1.525
Jaw depth	mm	830	1.035
Height	mm	2.270	3.000

